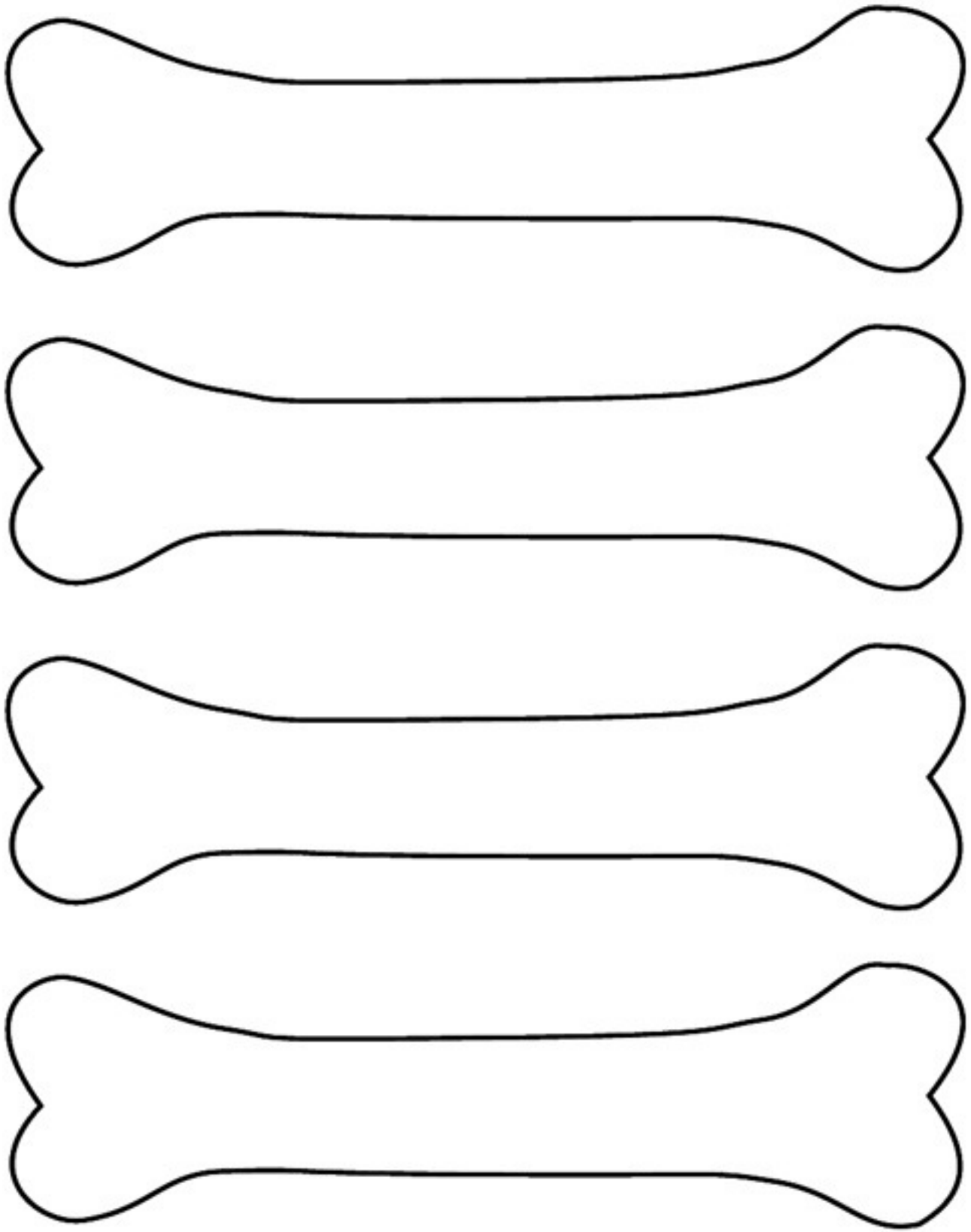


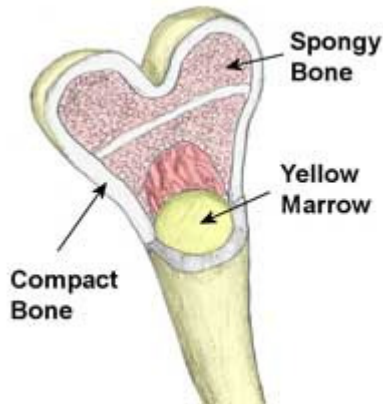
THINGS BONES DO FOR MY BODY

Four identical, empty bone-shaped outlines are arranged vertically, providing space for students to write their answers to the question above.



BONE

ANATOMY



Cut out and fold on dotted lines.

Attach this part to lapbook

←----- Cover

**PERIOSTEUM**

**COMPACT BONE**

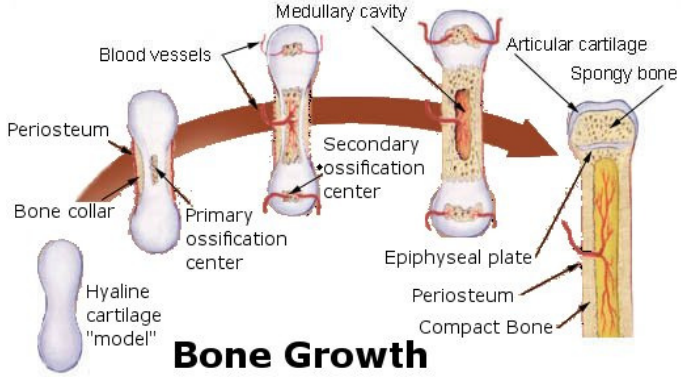
**SPONGY BONE**

**MARROW**

Cut out and fold on dotted lines  
Attach this area to the lapbook

# BONE GROWTH





---

---

---

---

---

---

---

---

---

---

---

---

---

---

---

---

---

---

---

---

---

---

---

An adult has \_\_\_\_\_ bones in their body.

A baby has \_\_\_\_\_ bones.

The longest bone in the body is \_\_\_\_\_

The smallest bones are found in the \_\_\_\_\_

There are \_\_\_\_\_ vertebrae in the spine.

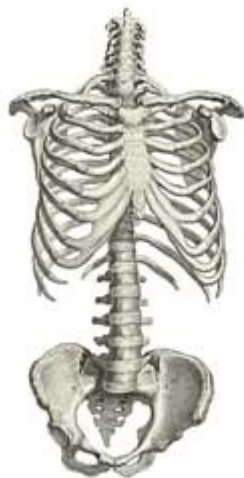
---

Cut out and fold on dotted lines

Attach skeleton to other side and label

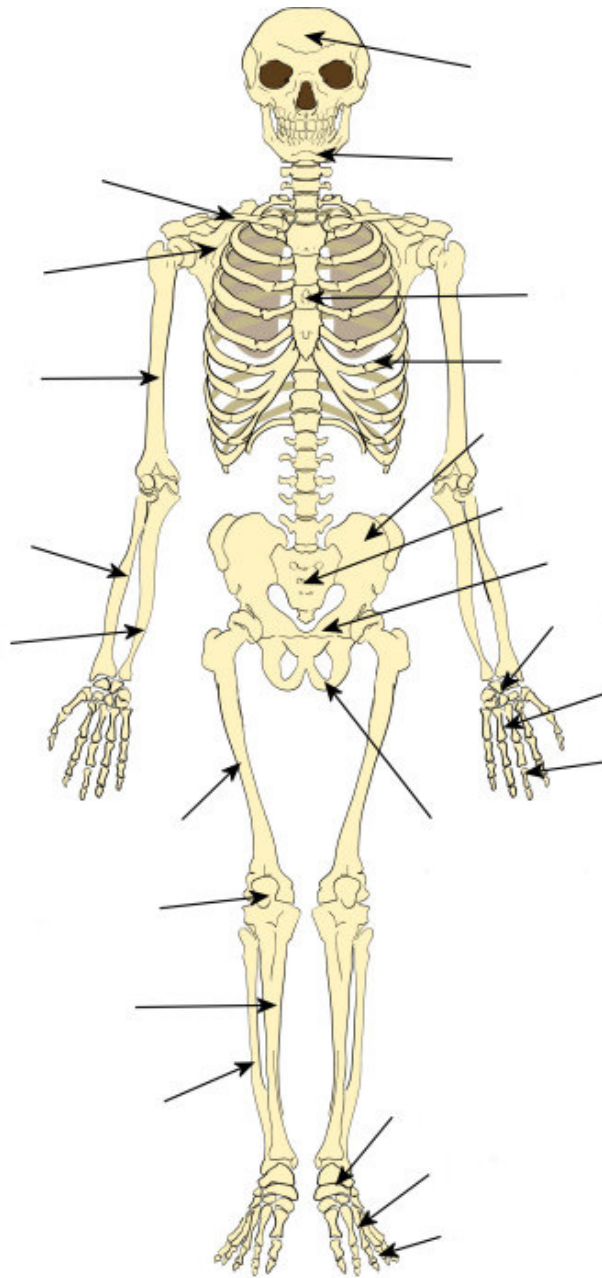
Attach this side to lapbook

---



**NAMING  
THE BONES  
IN MY BODY**

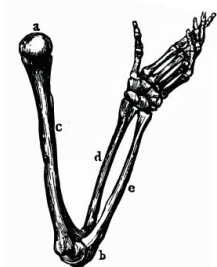
**Use this skeleton for the previous lapbook component.  
Cut out, attach to flap and label.**



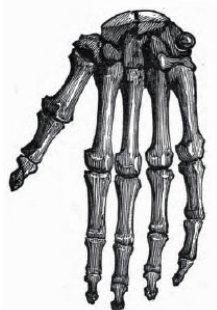
Describe the bones in each image. Hint: Try not to write too close to the dot.

Some of our writing was hard to read once the brad was placed. ☺

Use a brad to hold together.



arms



hands



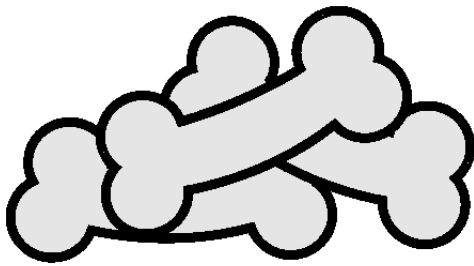
feet



girdles



legs

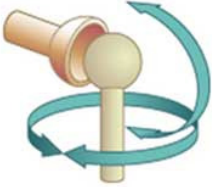
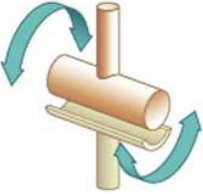
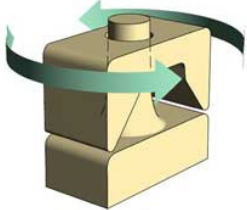


BONES



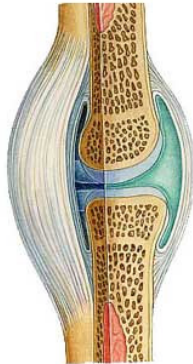
Describe each type of joint, give examples.

[http://kidshealth.org/parent/general/body\\_basics/bones\\_muscles\\_joints.html?tracking=P\\_RelatedArticle#](http://kidshealth.org/parent/general/body_basics/bones_muscles_joints.html?tracking=P_RelatedArticle#)

Ball and Socket Joints	Hinge Joints	Pivot Joints
		
<hr/> <hr/> <hr/> <hr/> <hr/> <hr/> <hr/> <hr/>	<hr/> <hr/> <hr/> <hr/> <hr/> <hr/> <hr/> <hr/>	<hr/> <hr/> <hr/> <hr/> <hr/> <hr/> <hr/> <hr/>

Cut out and glue to the cover on the next page. Fold on the dashed lines.

# Types of Joints



Attach this side to lapbook

The ends of the bones which come together to form joints, are overlaid with the hard, firm, smooth, and elastic substance called cartilage.

The object of this lining is clearly to form a smooth and highly polished surface on which the joint may move without friction or wearing. This lining cartilage is of pearly whiteness, and not more than one-sixteenth of an inch in thickness.

