

Four Major Functions of Blood

1. _____

2. _____

3. _____

4. _____



Lined writing area for Red Blood Cells.

Red Blood Cells

Lined writing area for White Blood Cells.

White Blood Cells

DEFINE THESE HEART TERMS

myocardium - _____

pericardium - _____

endocardium - _____



interventricular septum - _____

interatrial septum - _____

atrioventricular valves - _____

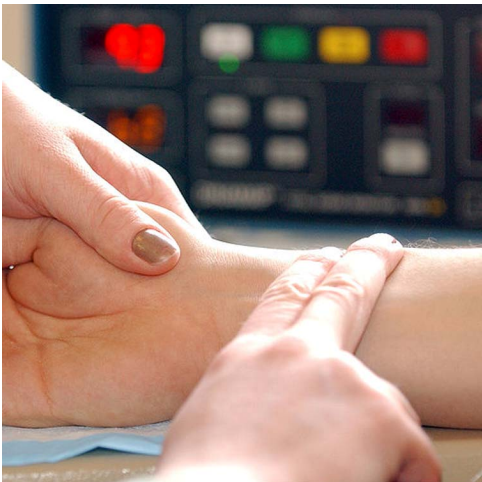
semilunar valves - _____



BEATING HEART



Beating Heart

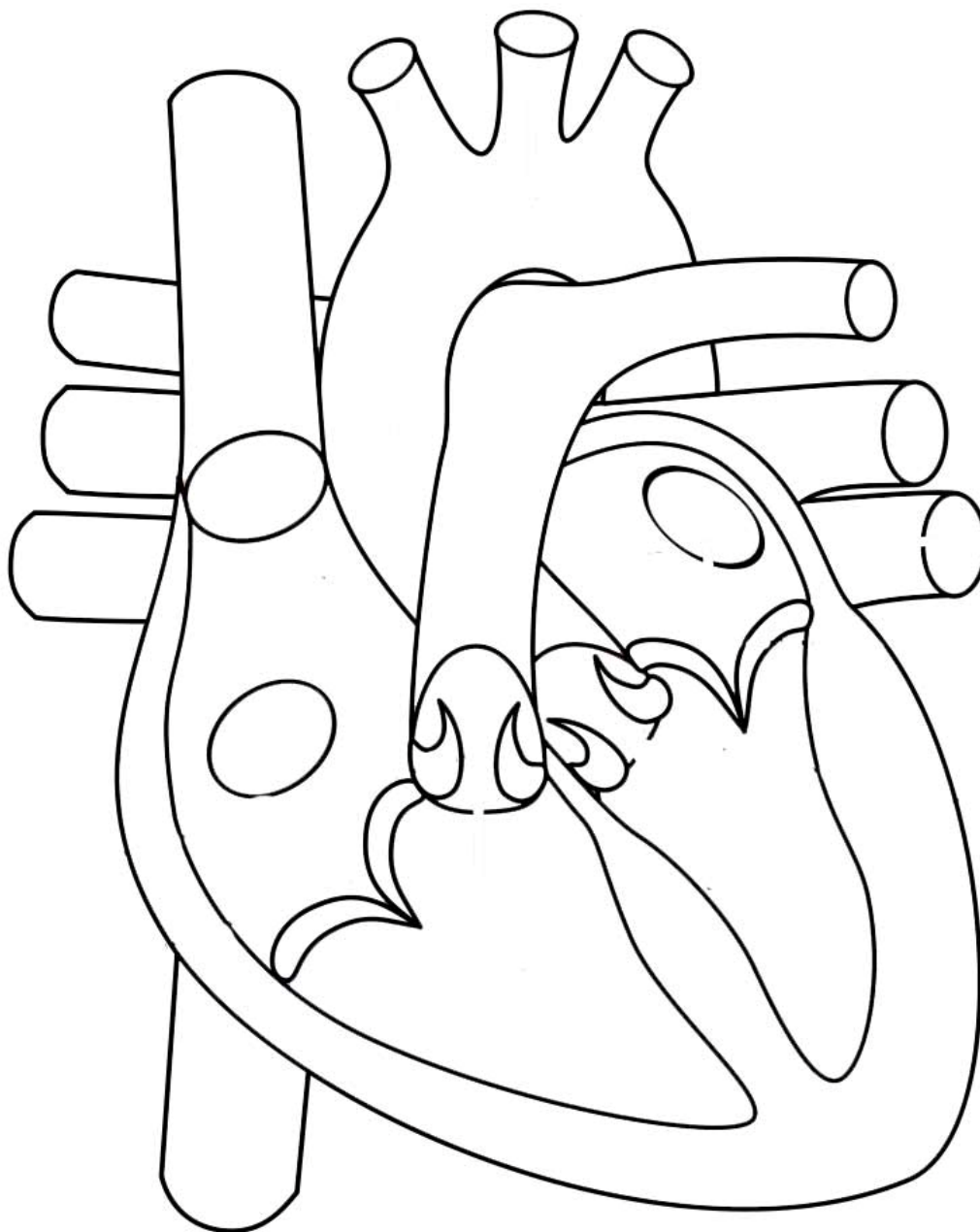


Pulse



Blood Pressure

Label the heart and color the chambers and vessels that have deoxygenated blood blue. Color the chambers and vessels that contain oxygenated blood red. Also use arrows to indicate the path that blood takes as it travels into the heart, out the pulmonary arteries, back into the heart from the pulmonary veins, and out from the aorta.



Right ventricle

Right atrium

Left ventricle

Left atrium

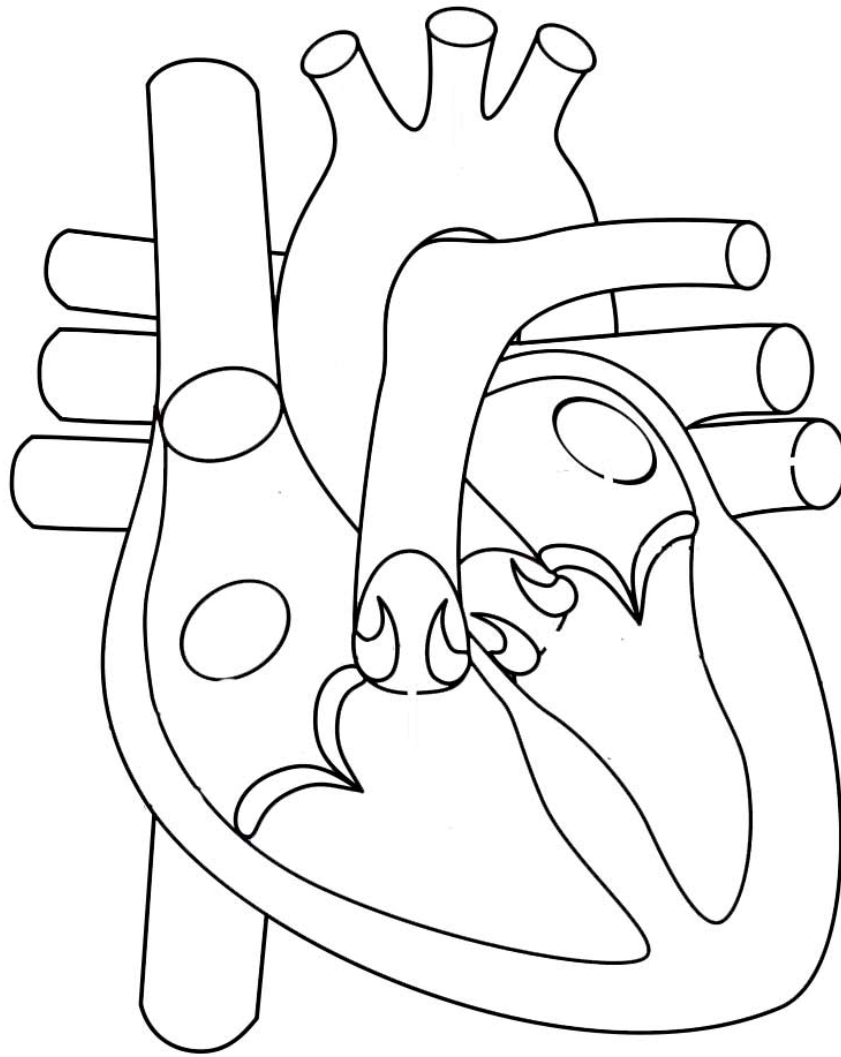
Inferior vena cava

Aorta

Pulmonary vein

Pulmonary artery

Superior vena cava



Right ventricle
Right atrium
Left ventricle
Left atrium
Superior vena cava

Inferior vena cava
Aorta
Pulmonary vein
Pulmonary artery

